

**Final Examination POLS 4635  
The Politics of Income Inequality**

**12 December 2016**

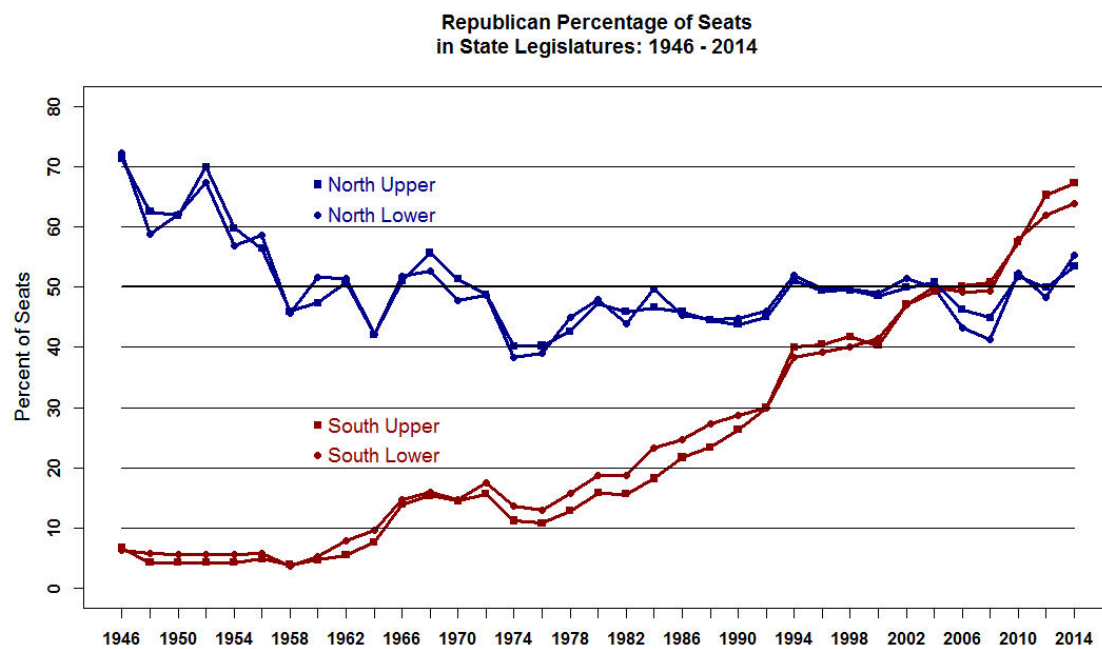
Professor Poole

**PLEASE KEEP YOUR ANSWERS *SHORT AND SPECIFIC* TO ALL  
QUESTIONS**

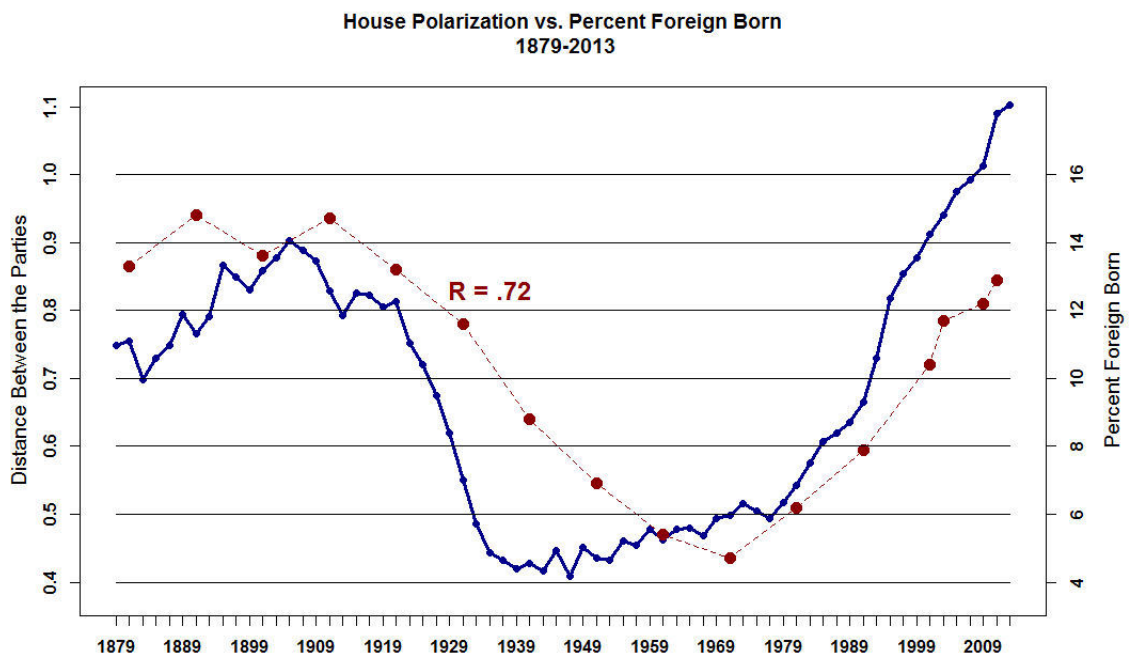
**DO NOT WRITE ON THIS PAGE**

1. According to Stiglitz, what is “Rent Seeking”?

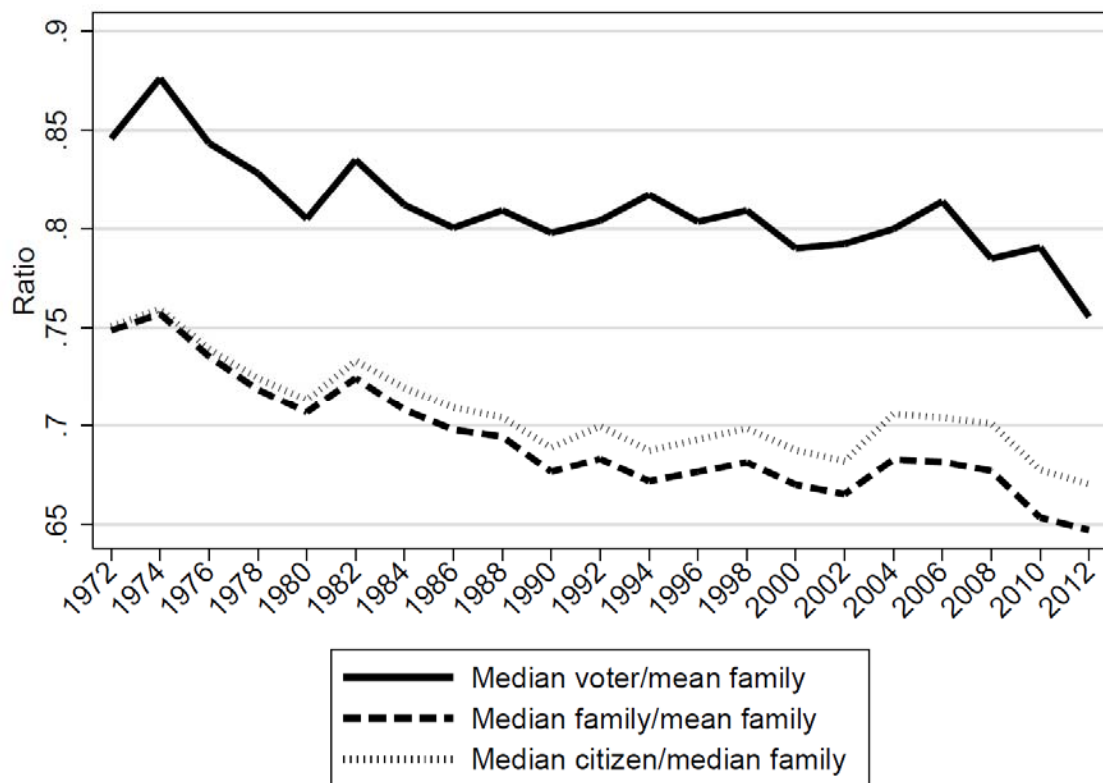
2. Summarize the important changes in the Party System that this figure illustrates?



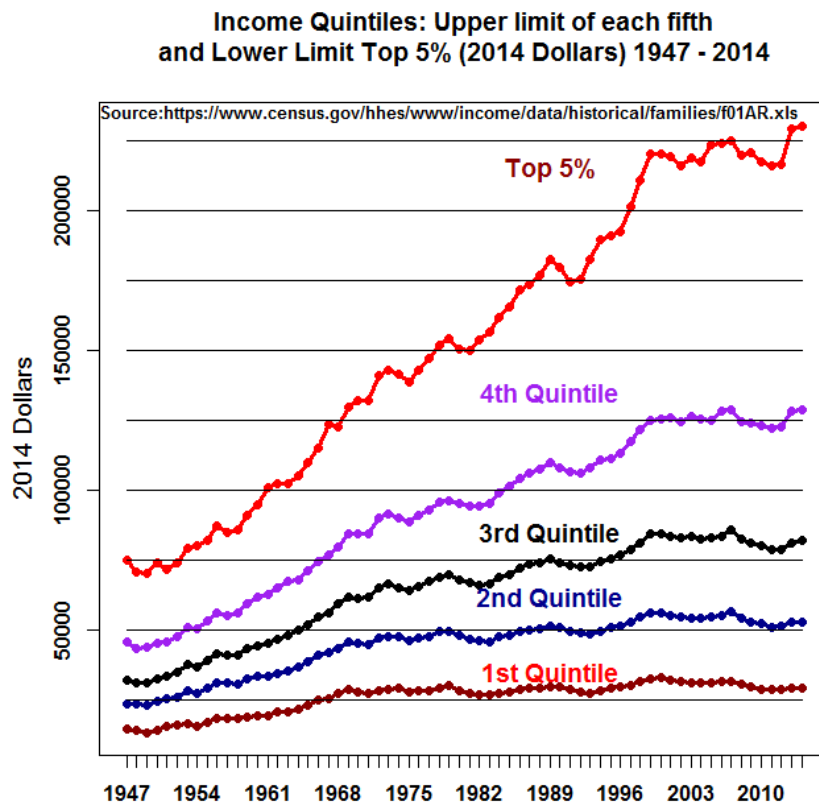
3. Explain this figure.



4. This figure is from *Polarized America*. What is the meaning of this figure (just the solid line and solid dashed line)?

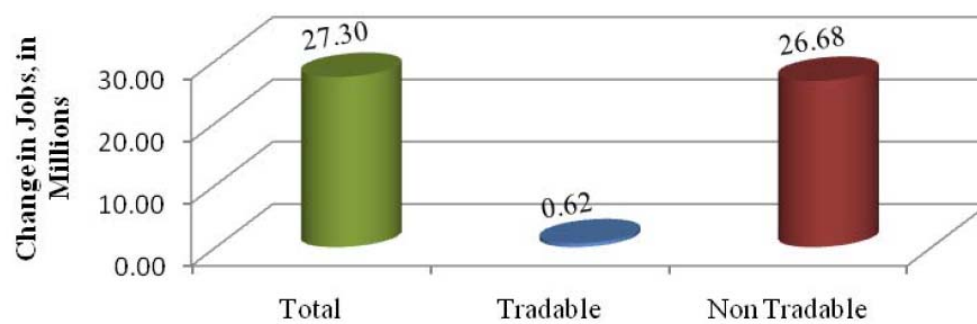


5. What is the political importance of this graph?



6. This is Figure 5 from the Spence essay. Note that is *before* The Great Recession started. What does this figure tell us about the modern economy?

Figure 5. Total Change in Jobs, 1990–2008



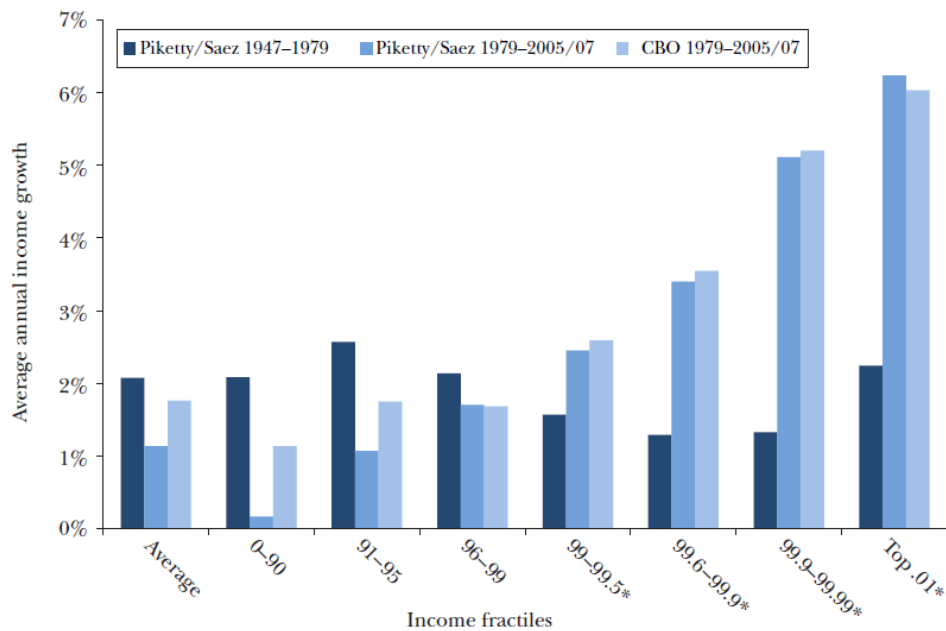
Source: Authors' calculations using Bureau of Labor Statistics historical data series



7. This figure is from the essay by Bivens and Mishel in the *Journal of Economic Perspectives*. What is their argument with respect to this figure?

Figure 1

Average Annual Income Growth by Fractiles, by Time Period and Dataset



Source: Authors' analysis of updated data from Piketty and Saez (2003) and Congressional Budget Office (2012).

\* Indicates data series end in 2005.