

**Second Examination POLS 4615  
The Polarization of American Politics**

**21 October 2016**

Professor Poole

**PLEASE KEEP YOUR ANSWERS *SHORT AND SPECIFIC* TO ALL  
QUESTIONS**

1. What is the importance of this Figure from the essay by Abramowitz in *American Gridlock?*

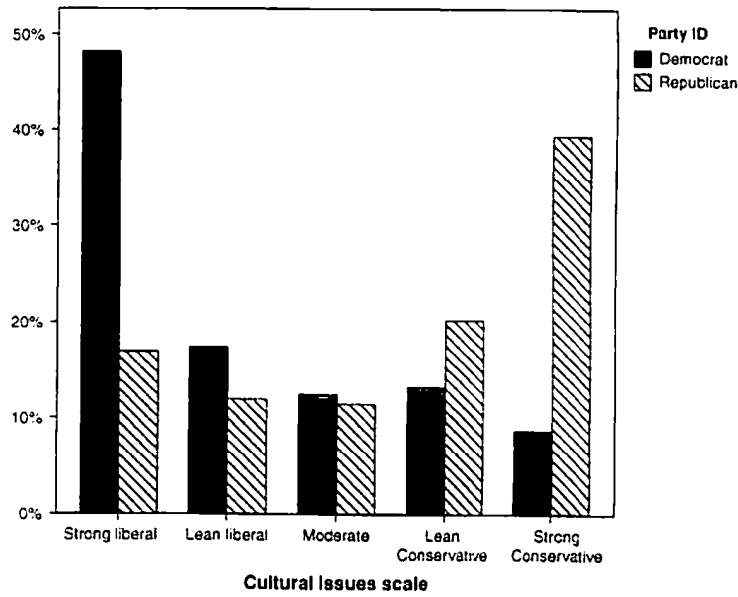
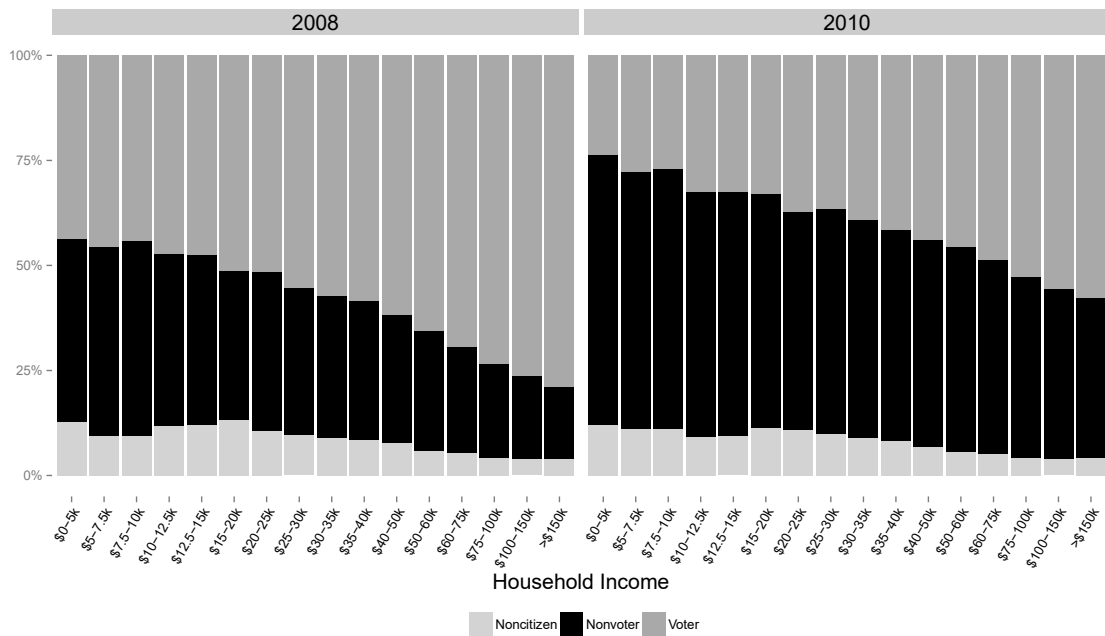


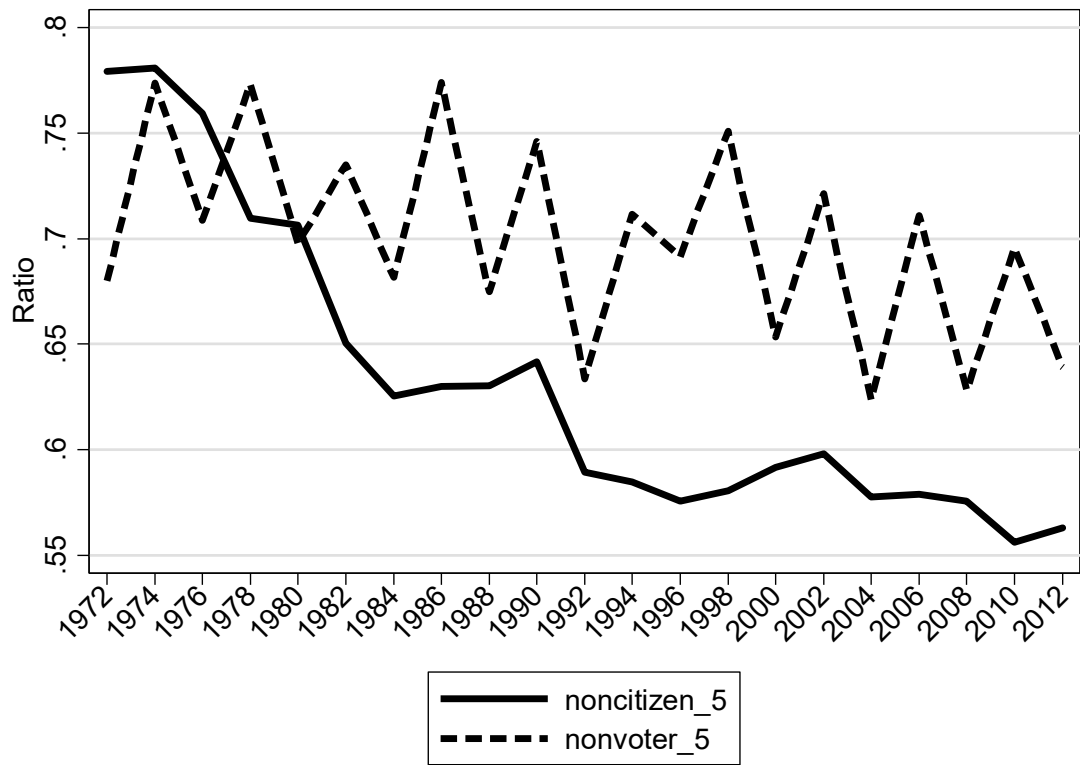
FIGURE 1. Distributions of Democratic and Republican Voters on Cultural Issues Scale in 2012

Source: 2012 American National Election Study.

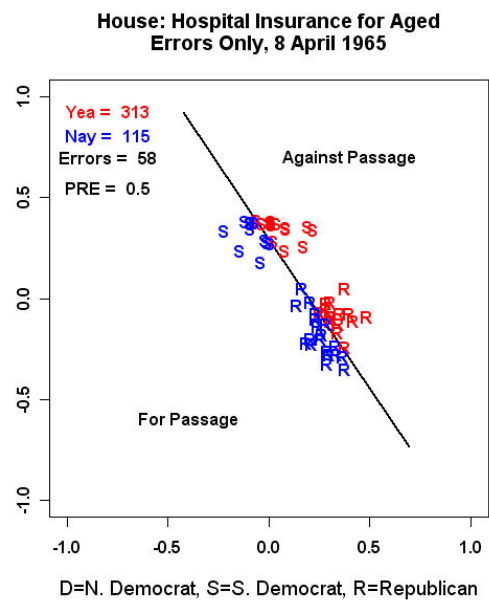
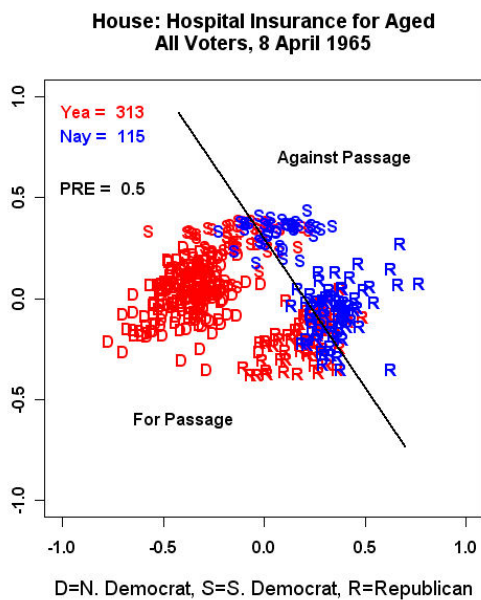
## 2. What does this Graph tell us about voting in Presidential and off-year elections?



3. What does Figure 4.5 from *Polarized America* tell us about nonvoters and noncitizens?



4. Explain the spatial map below. What is shown in the panel on the left and the panel on the right?



5. Below is Figure 1 from Fiorina's essay in *Political Polarization in American Politics* (essentially the same argument in *American Gridlock*). What is Fiorina's basic argument?

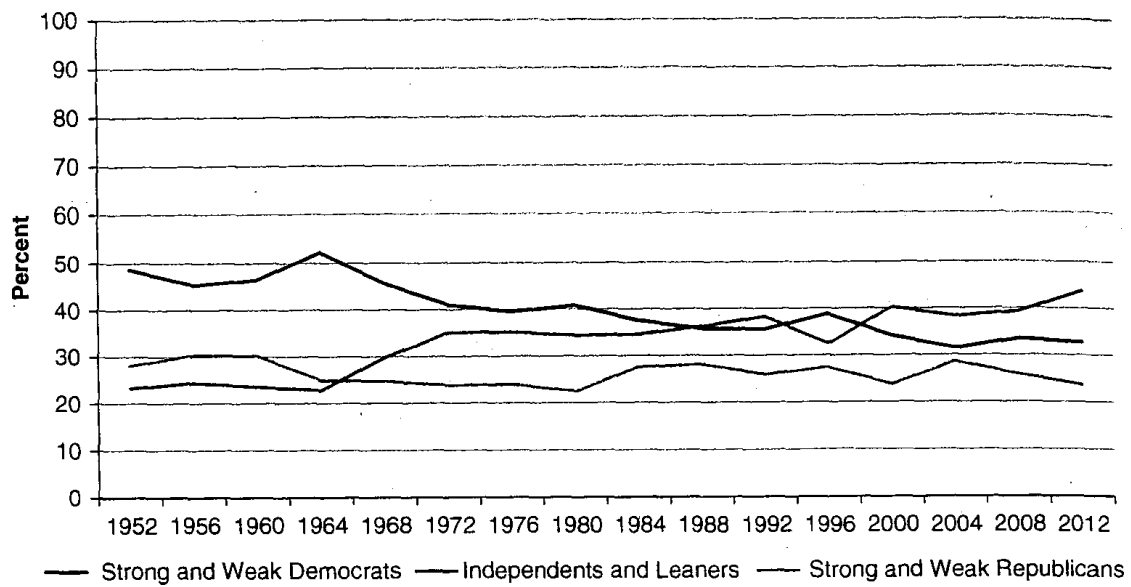


FIGURE 1. Partisanship Has Not Polarized

Source: Individual ANES files; all data has been weighted and uses FTF respondents only

6. What does this figure from the essay by Bond, Fleisher, and Cohen tell us about modern American politics?

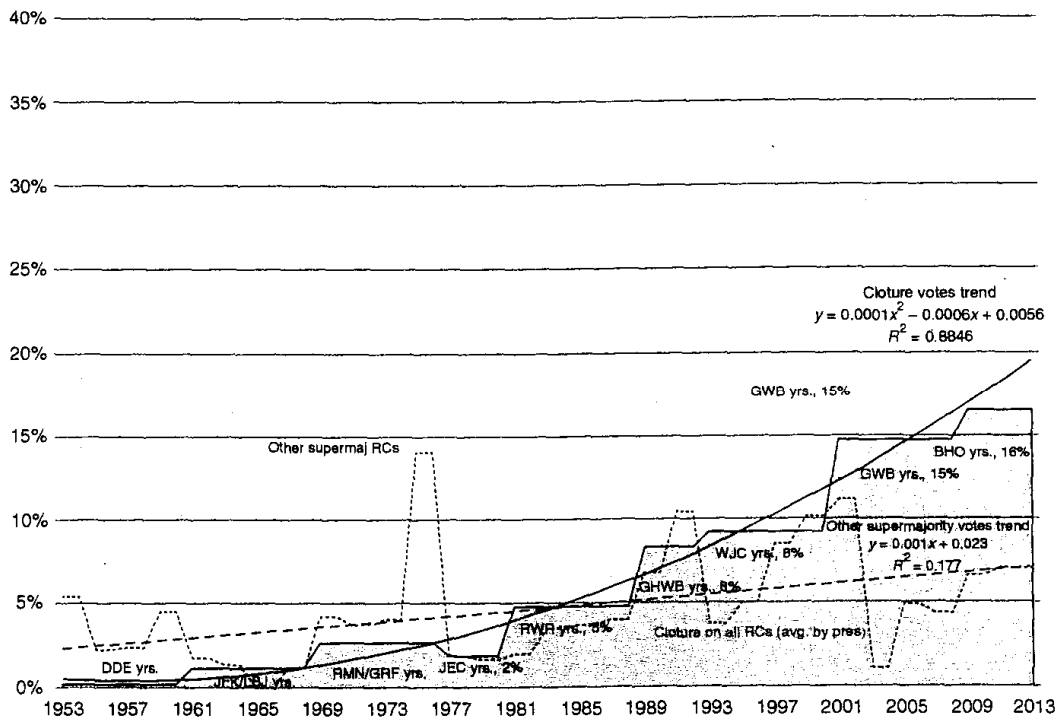


FIGURE 2. Mean Percentage of Cloture Votes by Presidential Administration